



Harold View, Leeds, LS6 1PP

£1,150 Per Calendar Month  
Available from: 1st July 2026



<https://www.sugarhouseproperties.co.uk>



## Property Details

### Full Description

If you are looking for a high spec two bedroom property then look no further!

Offering two double bedrooms, each with their own floor, a fully tiled bathroom and open plan kitchen/living space, whats not to love?

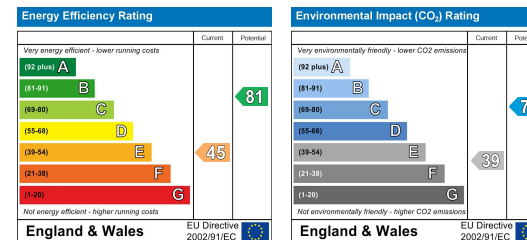
Furnished to a high standard and recently refurbished, this property won't be around for long.

Call now!

## Key Property Features

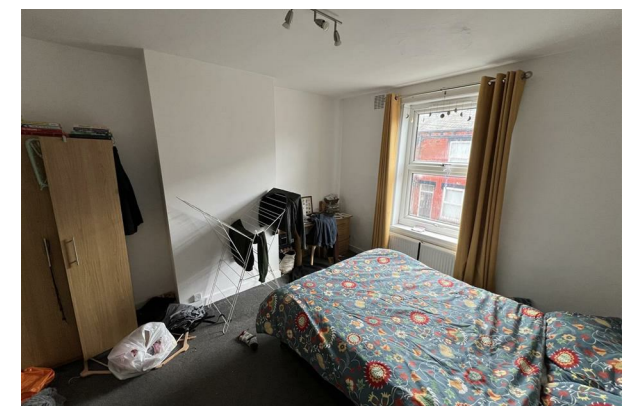
- Modern Interior
- Close to Uni
- Bedrooms on Separate Floors
- Prime Central Hyde Park Location
- Modern Bathroom
- Close Proximity to Takeaways
- Good Transport Links
- Close to Burley Park
- Spacious Bedrooms
- Council Tax Band A

## Energy Efficiency Graph



## Interested? Get in touch

Please contact us on 0113 8160131 or email [lettings@sugarhouseproperties.co.uk](mailto:lettings@sugarhouseproperties.co.uk) if you wish to arrange a viewing appointment for this property or require further information.



These particulars, whilst believed to be accurate, are set out as a general outline for guidance only. If in the event, any error or omission made in these particulars, the Agent or Landlord cannot be held liable as this is brochure is for information only.

0113 816 0131

Sugarhouse (Leeds) Ltd  
Registration Number 7594132 VAT Number 252251053  
Registered Office 47 Headingley Lane, Headingley, Leeds LS6  
Place of Registration England and Wales

[www.sugarhouseproperties.co.uk](http://www.sugarhouseproperties.co.uk) [/sugarhouseproperties](https://www.facebook.com/sugarhouseproperties) [@Sugarhouseleeds](https://www.instagram.com/sugarhouseleeds)